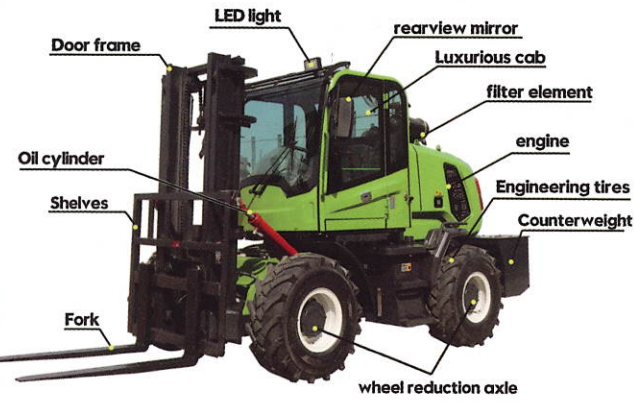


TERRAIN FORKLIFT



Yunnei/Xichai 490
 (can be customized)
 Automatic continuously variable transmission
 High and low speed torque converter
 Cast steel bridge with small wheels
 Luxurious seats
 Standard weight
 Single lever operation
 3500kg



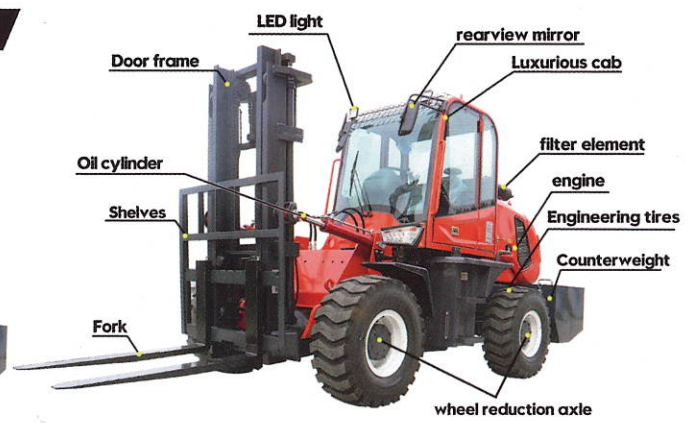
CPD ROUGH TERRAIN FORKLIFT

3.5 TON

All wheel drive
 Using large-diameter wide-base off-road tires, the minimum ground clearance of the vehicle is more than 250mm

Frame
 Articulated frame. The swing angle of the frame is generally $\pm 30^{\circ}$ - 40° , and the steering system is simple

flexibility
 Good maneuverability, good driving acceleration, and 25° - 35° climbing ability



PARAMETER	
engine	Yunnei/Xichai 490
Lifting height	3-7 meters (can be customized)
transfer method	Automatic continuously variable transmission
gearbox	265 dual high and low speed torque converter
Drive axle	Cast steel bridge with small wheels
seat	Luxurious seats
Door frame thickness	14.5cm
Counterweight	Standard weight
handle	Single lever operation
brake	Air brake
tire	20.5/70-16
Vehicle weight	3500kg

